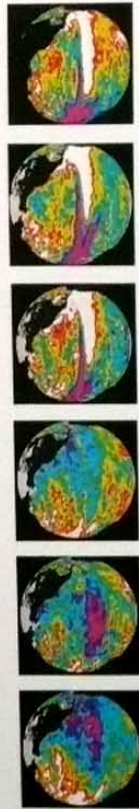
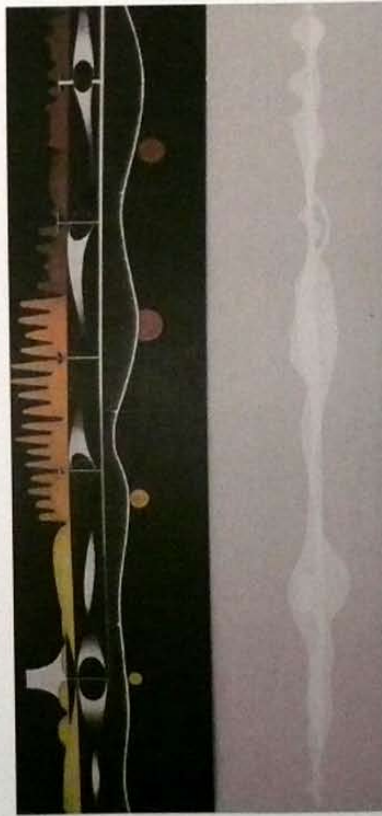


Luis Berríos-Negrón  
undergraduate portfolio

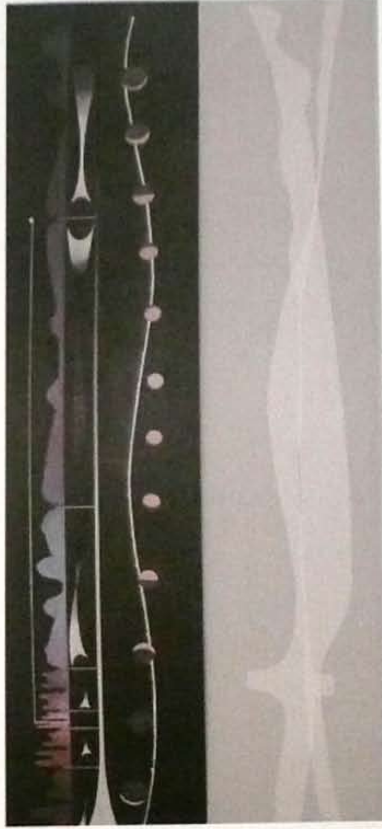
# WETLANDS & STICKY SPACE: A PERFORMANCE SPACE Professor Morris & Biggs



NASA



Point sections of atmospheric activity, weather station Central Australia



Point sections of oceanic activity, sonar buoy Northern Peru

The first phase requested an analysis of Fuller's dymaxion map, this with the intent of ingesting the problem of creating a bidimensional expression out of a tridimensional entity. A mapping of teleconnections, as proposed by Fuller himself, became the initial focus of such analysis.

The second phase of the problem requested the creation of an ecotone. In implementing this second phase the analysis lead to an investigation into the climatic phenomena known as El Niño / La Niña. The understanding of such revealed the ethereal networks of global atmospheric and oceanographic pressure spheres that in turn, driven by currents such as the Southern Oscillation, assign three pivotal areas within the Pacific Rim.



Geopolitical dynamion



Inspired by the Alexander Calder Circus, the third phase of the semester requested a device that, within the span in-between the subject's hands would represent strategies inferred by the previous phases. Applying Kant's riddle of the two hands, a wormhole contained in a sticky space (Hawking) was diagrammed through a latex artifact that collapsed liquids in/out one/two hole(s) expressing Fuller's concept of remote relationships, teleconceptions.



Above, latex probe of ecotone and development of Kant's Riddle. Left, Joe Andolt with his Kant's Riddle.

## WET LANDS & STICKY SPACE (Continued)

Site



The final phase of the semester requested a facility that would encompass the strategies implemented in the prior phases into the creation of a circus. The proposed area is within and about the site of the new Dia Center for the Arts in Beacon, NY. Beacon is a town on the shores of the Hudson River across from Newburgh.

In absorbing the girth and scale of the Hudson, an investigation of the genetic layout of this river was conducted. A 30 million year old synopsis was surveyed reflecting glacial activity that provided for the meeting of river and ocean. This condition today nurtures the existing estuary of the Hudson River. Much more recently, the Hudson River became the poster child for industrial negligence. Climatological acceleration and sea level rise pose a concern about these new conditions and thus pose a concern as to whether the temporal scale of change is proportional to human perception.



Prehistorical bioscopy of Hudson River (3' x 8')

Conceptual drawing, Mirror Sites



Studies into the behaviors of wetlands, such as Chesapeake Bay, Maryland, have become barometers of climate change. The shore of Beacon is appropriate for the fostering of existing and new wetlands. By way of installing a system of jetties, a feasible environment for these wetlands becomes attainable. The troughs that occur in between these installations provide, while harnessing the hydroelectric force of the Hudson and its aquatic and aerial behaviors, a pneumatic sticky space that reacts to the performative relationships of such forces and behaviors. This in turn reveals climactic data perceptible to human scale: wetlands that purify an intoxicated ecology with a structure whose (in)stability projects the ephemera of seasonal and climactic change.



Site drawing with Newburgh north and Beacon south, sphered by ferry and performance



Jetty system fomenting wetland, stretching peninsula, and infirming performance space

WET LANDS & STICKY SPACE (Continued)



Circus probe for neumatic performance space

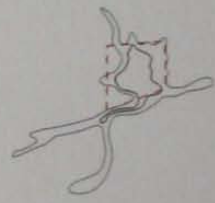
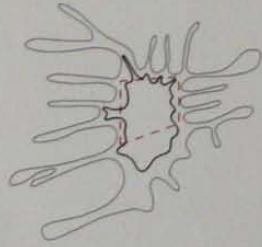
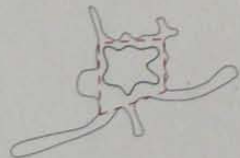
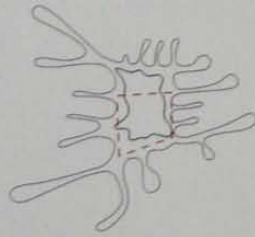


Surfacing isles above performance formed by river/estuary behavior

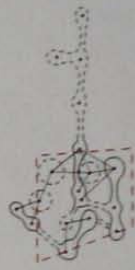
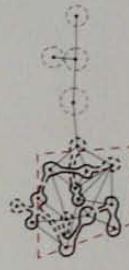
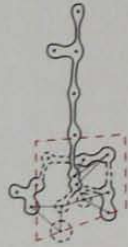


Crystallized section of performance space

PEAKS & CANYONS: ZONING OF GROUND ZERO Professor Sharples



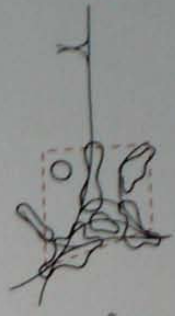
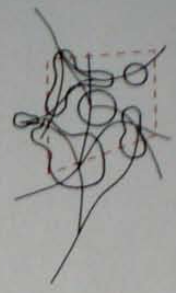
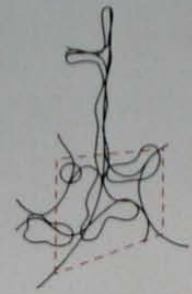
Range/Distance



Breeding/Exchange



Consumption/Energy

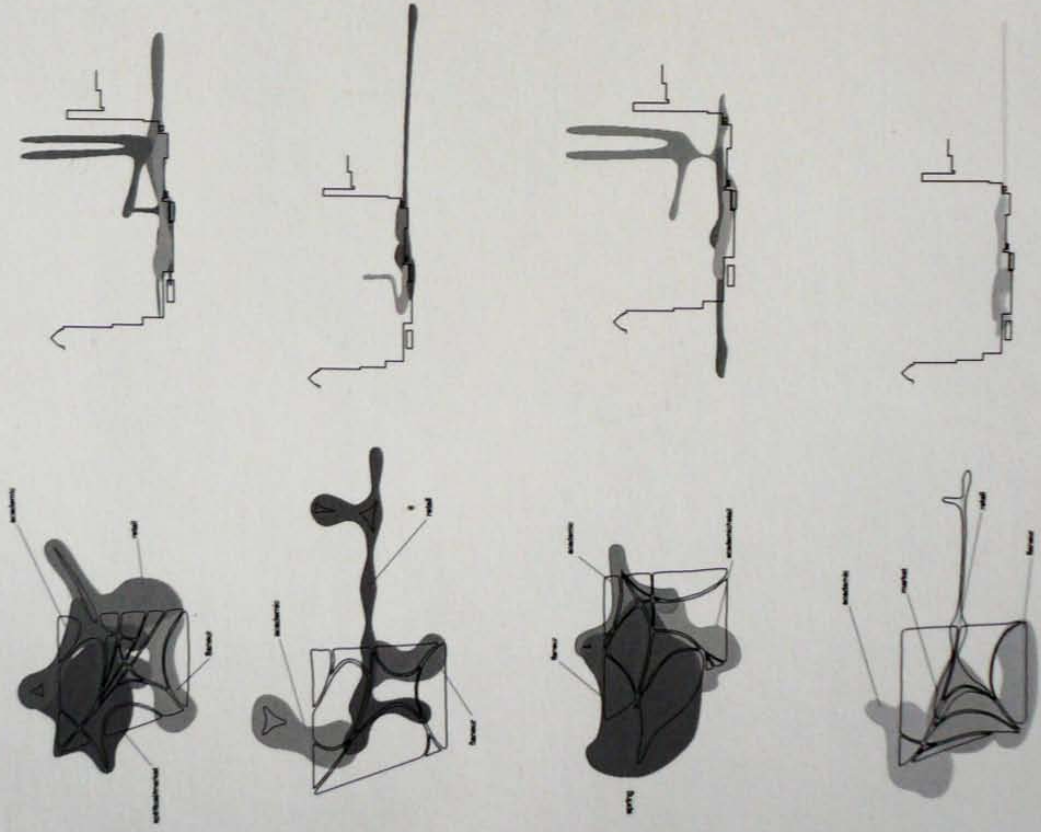


Territory/Specificity

This matrix is about reestablishing preconceptions about Ground Zero. The redevelopment should consider that fluctuating around the pivots or magnetic centers are regions of program flow. These regions fluctuate, not unlike the migration of birds, according to the natural and behavioral analysis of the calendar. Climate and holidays, traditional (i.e. 4th of July) and enforced (i.e. 9.11), form a psychography, a coached landscape of decision-making that determines our moods and the rituals we perform accordingly.

The occupation of the regions or zones will vary from season to season and so will the specifics of the events that take place within and around the pivots:

- **Spiritual** meditative, religious
- **Traffic** movement, circulation, exercise
- **Academic** students, artists, researchers, faculty
- **Market** farmer's, arts, services, commodities, materials, data, technologies
- **Flaneur** cafe, lounge, restaurant, club, soup kitchen
- **Retail** tenant mix, ambulant, stationary, delivery access



Regions, troughs and zones



## PEAKS & CANYONS (Continued)

### PROGRAM PIVOTS

**1. Memorial** the redevelopment of Lower Manhattan is the process itself that memorializes September 11th and its victims. The northwest area of Ground Zero remains as the ideal location for any gesture of this kind given that it enjoys the least interference between the sun and the surrounding edifice. As a place for silence it provides an ideal psychography for remembrance and fertility, regardless of the season.

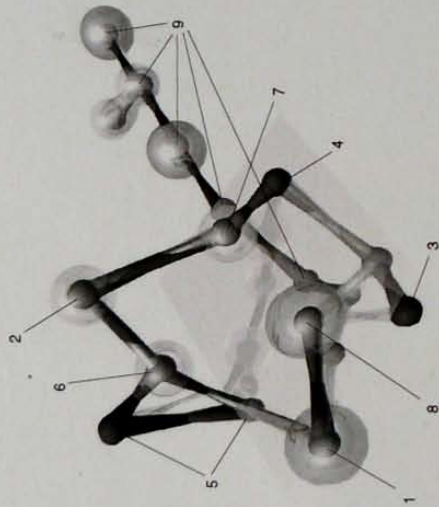
**2. Incubator** academic component designed to explore the diplomatic and bioethical arts. Driving programmatic element in the redevelopment and memorial process.

**3. Arena** the robust interactivity of bringing some of these cultures into the discursive realms of curricula might instigate moments of great tension and confrontation. This facility will provide space to exercise such confrontations through the medium of athleticism or sport.

**4. Opera** This performance space shall occupy the southeast section of the site where performances and cinema will encourage consistent north-south thoroughfare traffic.

**5. Museum** a space dedicated to exhibiting world art and artifact fomenting the pedagogical process of the incubator.

**6. Library** space suspended between the museum and the incubator as a bridging form housing information, intended to strengthen the pivotal interconnectivity between the genealogical and the pedagogical.

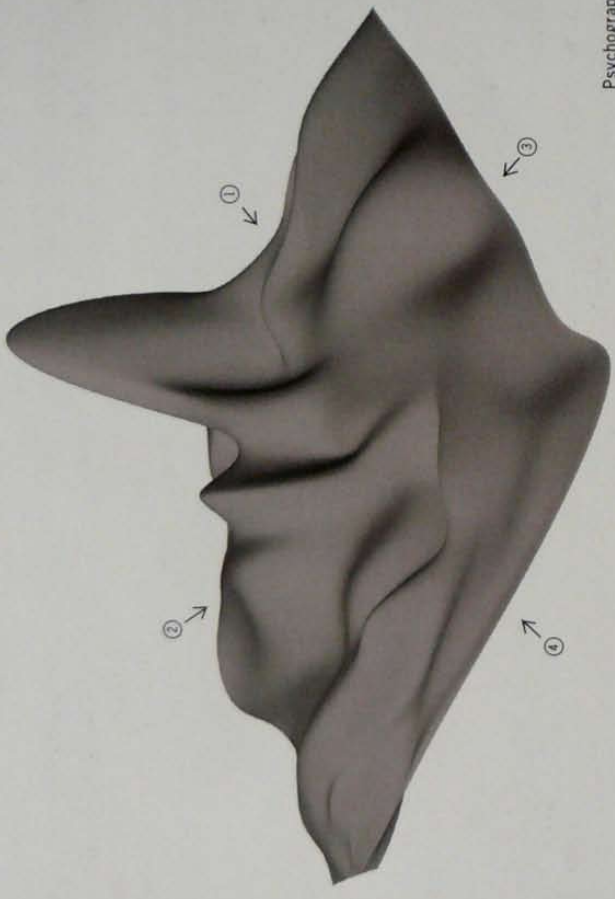
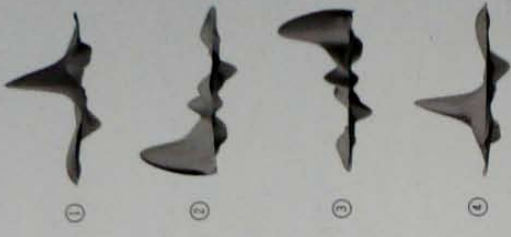


Program Composite

**7. Conference** is to be suspended between the incubator and the opera as bridging form housing dialogue, this intended to strengthen the pivotal interconnectivity between the pedagogical and the theatrical.

**8. Amphitheater** may occupy the mid-ground below grade area between the arena and the memorial, an outdoor space for festival that consciously celebrates the aural separations between the silence of memorial and the cacophony of sport.

**9. Grand Central South** in order to facilitate efficient traffic in and out of the site, while still re-encapsulating the segmentation of Lower Manhattan, this satellite hub to the original Grand Central in mid-town proposes a below grade promenade that connects west parking access with subway services in Williams Street, Nassau Street, Broadway, Church Street, and West Broadway, this including the pivotal PATH station.

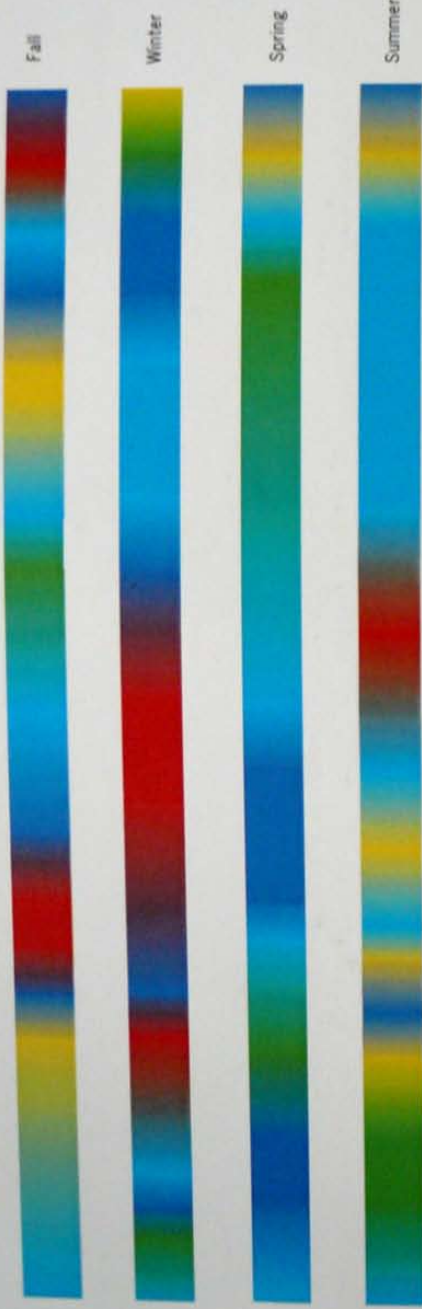


Psychography



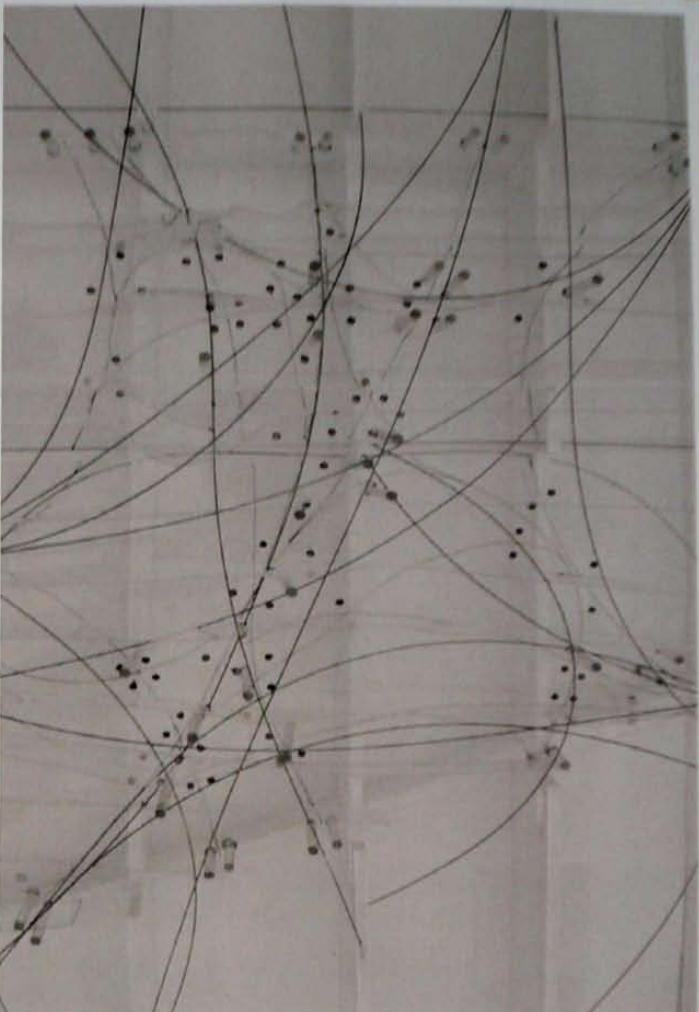
# PEAKS & CANYONS (continued)

>> See enclosed Environmental Calculator

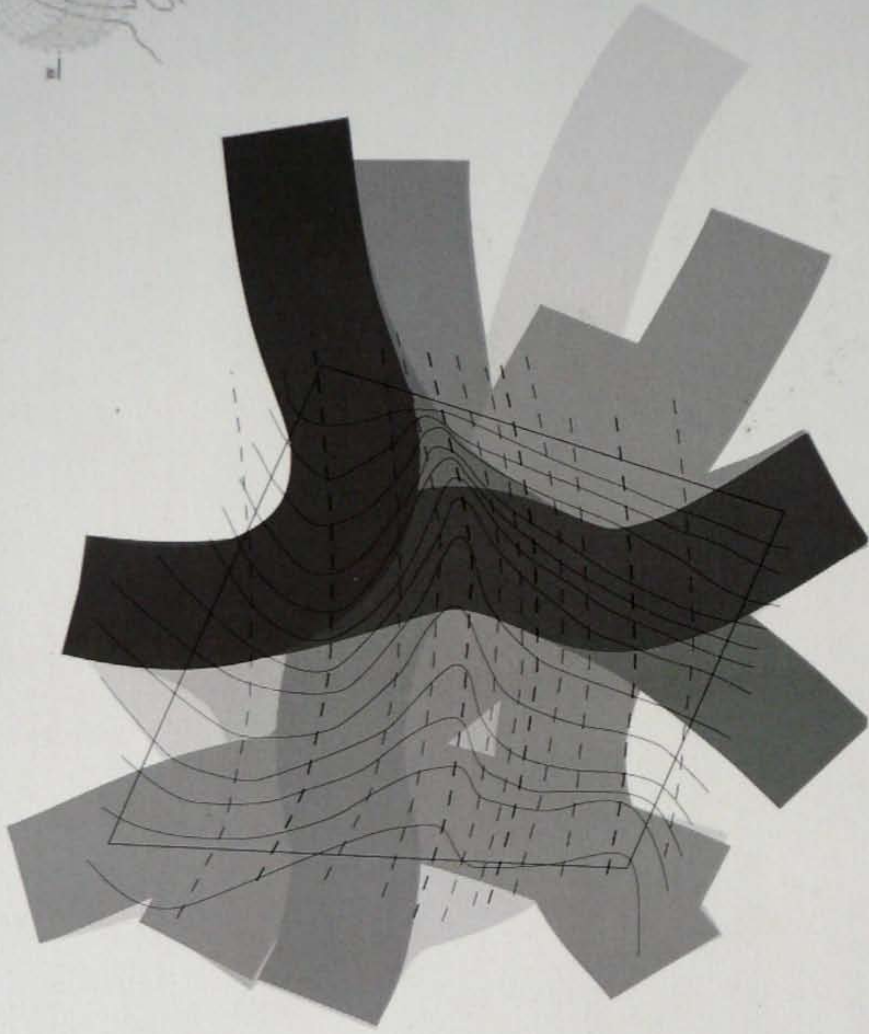
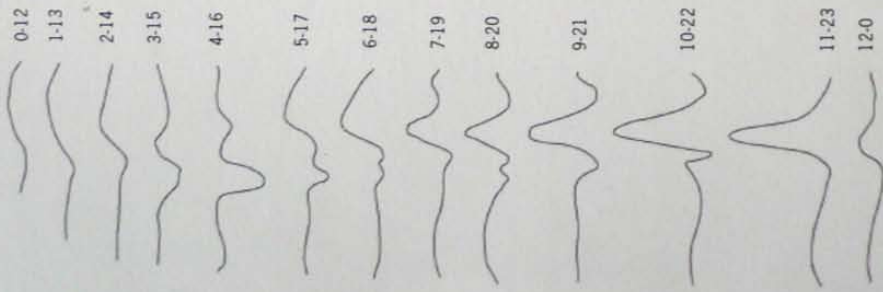


Calendar flows

The inhabitants of the site whether being commuters, tourists, shoppers, and/or vagabonds are stimulated to engage with the subtle and not so subtle impact of natural and constructed conditions on our behaviors. This will ultimately propose a mapping of the site that will require a seasonal reading device. Such device, depending on time, computes the location and flow patterns acting in the site at that desired moment.



Occupation and solar pattern model



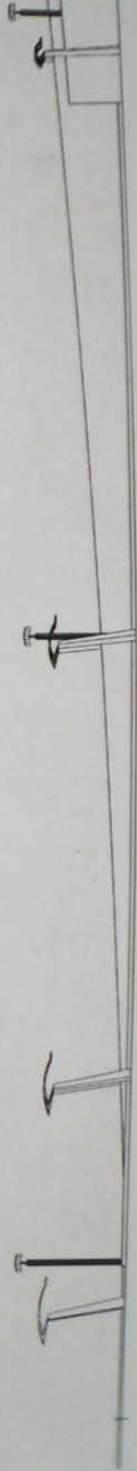
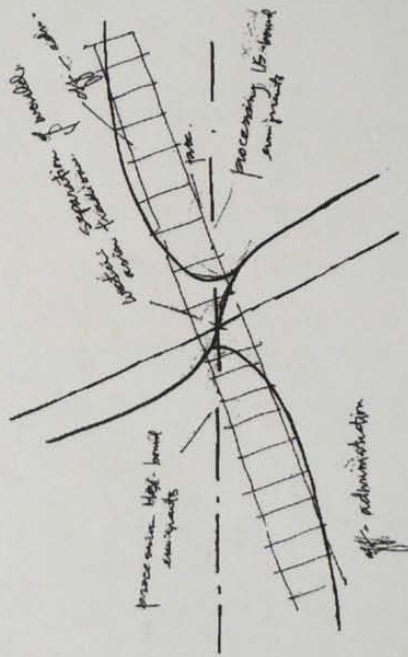
A tectonic transposition of the natural and behavioral data yields a temporal grid of the 24 hours of September 11th and of the seasons. This alternate grid, harnessed to the existing one, facilitates a context for the pivots of the sun thus informing a precise

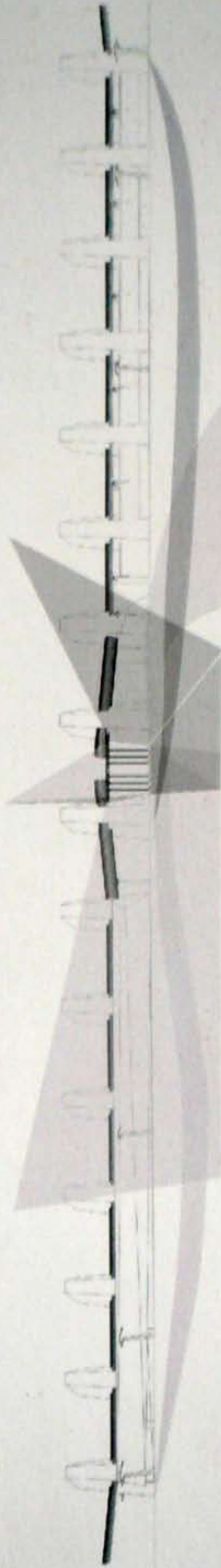
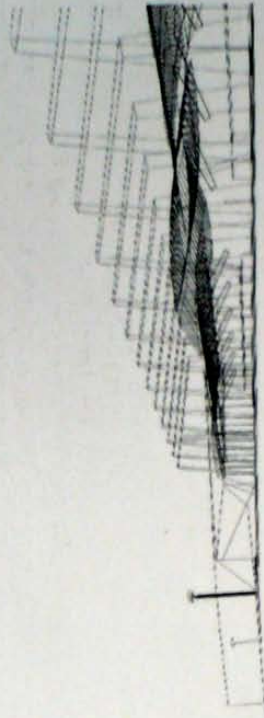
topology, the psychography. The zones, in this case of the fall season, occupy the landscape profiling an evolving remembrance of 9.11 particular to the events, solar presence and climate: a photo-synthetic memorial.

While pursuing the definition of forces acting on hierarchical devices, a figurative inquiry arose. In solving the problem of designing parallel stations for the United States and Mexico, both my counterpart (Andrew Butt) and I faced the profound and forceful issue of confronting cultures. Likewise, programmatically, it was a challenge to consummate the mechanisms involved in processing migrants.

We challenged the proposed program of two separate stations by arguing for a singular structure. This bi-polar yet singular structure would therefore thicken the figure of the boundary as to become a processing zone.

The corresponding zones flowed on through the ramping interior of the stations under the spanning wing-like steel and aluminum active brisoleil roof system that traversed the array of concrete and stone piers.





The border itself becomes the site for a structure that merges the corresponding formal and material specificities of each nation: the monolithic girth of pre-Columbian masonry and the streamlined wingspan of American engineering.

In using the midpoint of intersection between the crossing highway and the international border as a pivot point, we used the degrees of separation to assign the corresponding programmatic space seaming each nation's processing territory. The actual pedestrian crossing occurred below the vehicular checkpoint where the migrant literally crossed a body of water, the water itself representing the separation of worlds and the joining of cultures.

